



KISS CROSS FABRIC

KISS CROSS FABRIC

Kiss Cross Fabric is a woven upholstery fabric inspired by traditional Welsh blanket design, reinterpreted with a contemporary sensibility. Woven in Yorkshire, the reversible design is suitable for upholstery, curtains, or bed covers.

WIDTH 140cm

REPEAT

Vertical 4.6cm

Horizontal 4cm

COMPOSITION 65% Cotton, 30 % Wool,
5% Nylon

RUB 35,000

MOQ 1m

LEAD TIME Approximately 12-14
weeks, if out of stock.

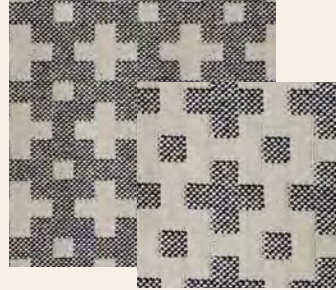
N.B This is a hand-crafted, hand-woven product, certain imperfections and irregularities may occur. This fabric is not guaranteed against natural wear, fading and dye-lot variation.

CARE

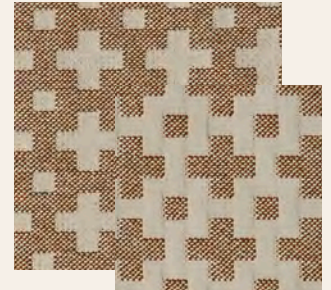
We recommend dry cleaning only. Avoid machine washing, tumble drying or bleaching, as this may affect the structure and handle of the cloth.

Keep away from prolonged direct sunlight. Light, regular vacuuming with a soft brush attachment will help maintain the surface and prevent dust settling into the weave.

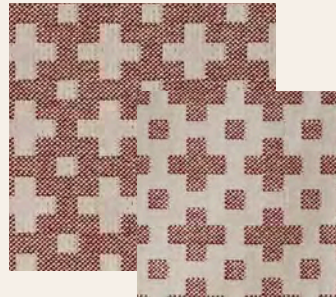
AVAILABLE IN 7 REVERSIBLE
COLOURWAYS:



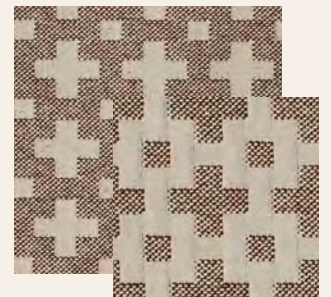
NAVY



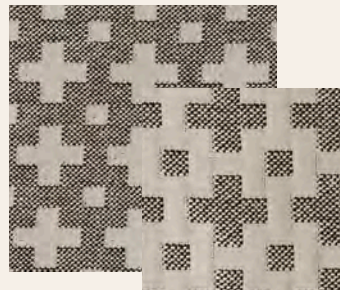
OCHRE



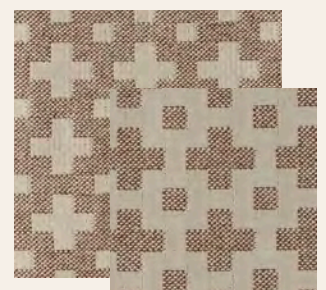
RED



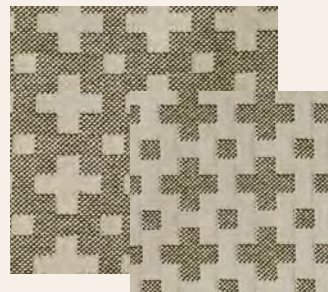
CHESTNUT



CHARCOAL



TAUPE



OLIVE