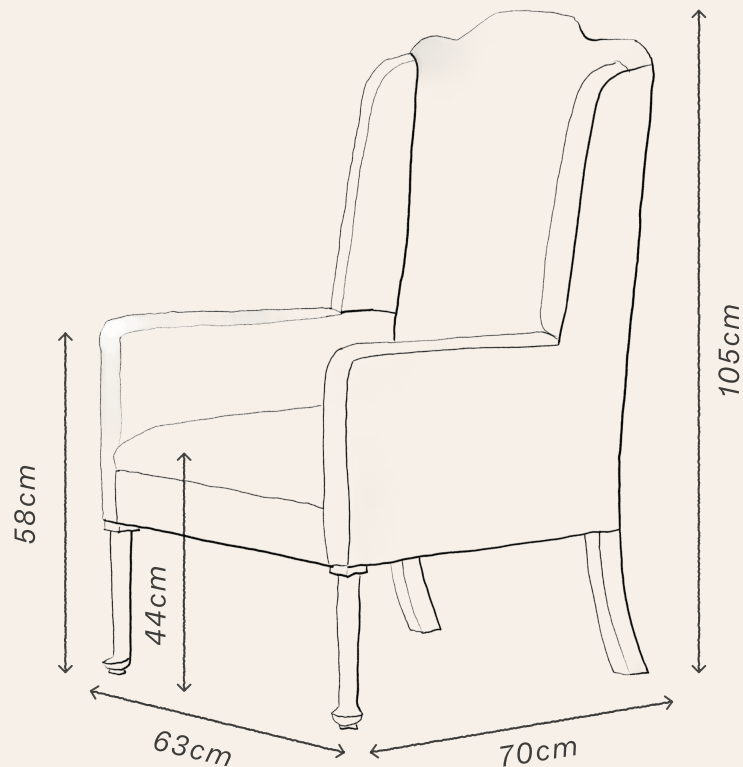


HARTING WING CHAIR



HARTING WING CHAIR



The Harting Wing Chair is available in Three Stripe in *Terracotta & Blue*, Checkerboard in *Toffee*, and Woodland Rose in *Tobacco & Rust*.

DIMENSIONS

Width	63cm
Height	105cm
Depth	70cm
Seat H	44cm

LEAD TIME

Approximately 8-10 weeks

N.B

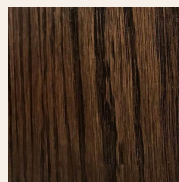
This product is handmade in England

CARE

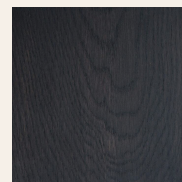
Upholstery: Clean according to fabric specifications.

Wooden Feet: Gently wipe with a microfibre cloth and wax with a good quality wax polish.

FEET FINISHES

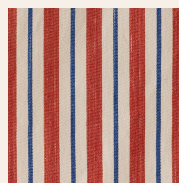


DARK OAK



EBONISED

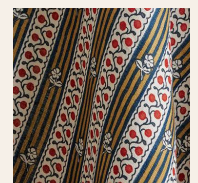
FABRIC



THREE STRIPE IN
*TERRACOTTA &
BLUE*



CHECKERBOARD
IN *TOFFEE*



WOODLAND ROSE
IN *TOBACCO &
RUST*

Our Harting Wing Chair can be upholstered in a fabric of your choice. Please enquire.

Fabric Requirements: 5.5 m

Fabric Requirements:

1 pattern - 6.5m

2 patterns (as pictured) - 6m main pattern, &

1.5m top pattern.