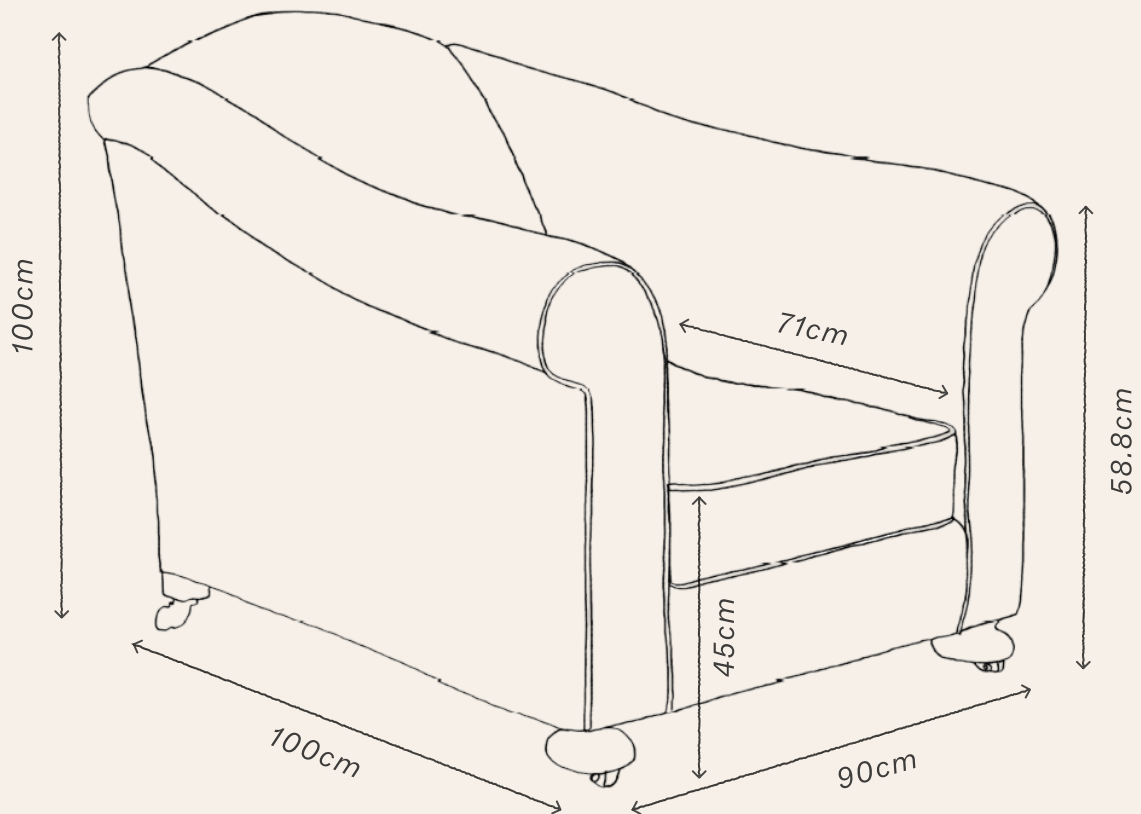


BIG EASY ARMCHAIR



BIG EASY ARMCHAIR



The Big Easy Armchair is a classic armchair designed for comfort without compromising on style. It features a deep seat and distinctive dark oak feet. It is traditionally upholstered and hand sprung. Available to purchase alone or with the Easy Ottoman.

DIMENSIONS

Width	90cm
Height	80cm
Depth	100cm
Seat H	45cm
Seat D	71cm

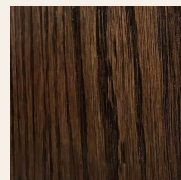
LEAD TIME

Approximately 8-10 weeks

N.B

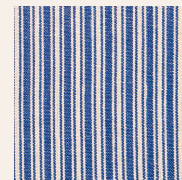
This product is handmade in England

FINISH

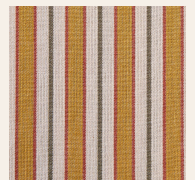


DARK OAK

FABRIC OPTIONS



TRADITIONAL
TICKING IN BLUE



THREE STRIPE
IN GREEN &
GOLD

Our Big Easy can be upholstered in a fabric of your choice. Please enquire.

Fabric Requirements: 15m

Piping (optional) - 2 m of fabric, or 12.5 mm of piping cord.

CARE

Upholstery: Clean according to fabric specifications.

Wooden Feet: Gently wipe with a microfibre cloth and wax with a good quality wax polish.